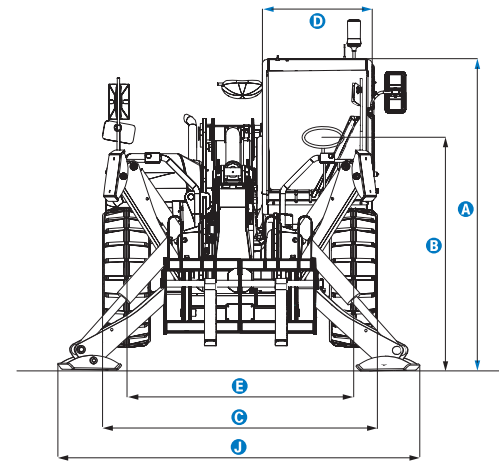
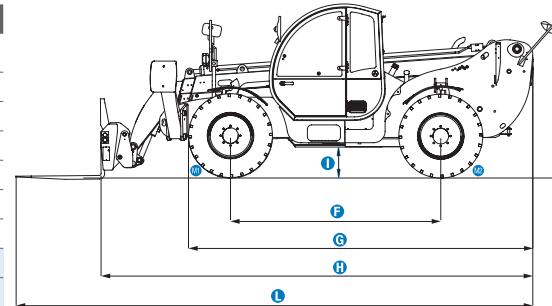


Specifications

MODELS		GTH™-4013 SX & GTH™-4013 EX	
MEASUREMENTS		Metric	Imperial
Lifting height maximum with outriggers	12.99 m	42 ft 7 in	
Lifting height maximum without outriggers	12.80 m	42 ft	
Lifting capacity maximum	4,000 kg	8,818 lbs	
Lift capacity at maximum height	3,000 kg	6,614 lbs	
Lift capacity at maximum reach	1,250 kg	2,756 lbs	
Forward reach maximum	9.08 m	29 ft 9 in	
Reach at maximum height	1.90 m	6 ft 3 in	
A Height	2.40 m	7 ft 10 in	
B Height at steering wheel	1.56 m	5 ft 2 in	
C Width	2.32 m	7 ft 7 in	
D Cab width	78 cm	2 ft 7 in	
E Track	1.92 m	6 ft 4 in	
F Wheelbase	2.95 m	9 ft 8 in	
G Length at front wheels	4.79 m	15 ft 9 in	
H Length at fork-holder plate	6.06 m	19 ft 11 in	
I Ground clearance	30 cm	1 ft	
J Overall width, outriggers extended	2.89 m	9 ft 6 in	
L Overall length	7.26 m	23 ft 10 in	
M1 Obstruction angle		40°	
M2 Departure angle		46°	



PRODUCTIVITY		
Inside/outside turning radius	2.42 m/4.65 m	8 ft 1 in/15 ft 3 in
Break-out force (with 800 L shovel SAE J 732/80)	6,000 kg	13,228 lbs
Towing capacity at dynamometer*	6,600 kg	14,550 lbs
Drive speed max.	30 km/h	19 mph
Fork-holder plate rotation		138°
Chassis levelling on front axle		+/- 7°
Tyres (DIN 70361)	405/70 20" PR14 8 holes wheel disc	
Lifting/lowering speed*	11 sec./7 sec.	
Extension/retraction speed*	17 sec./11 sec.	

POWER AND TRANSMISSION		
Engine	Perkins 1104 D-44T turbo diesel 99 hp (74 kW), stage III	
Transmission	Hydrostatic variable displacement pump linked to variable displacement motor. Both piston type.	
Service pumps	Boom & control system gear pump type: 280 Bar, 99L/min. Service brake gear pump type: 200 Bar, 46 L/min.	
Petrol tank capacities	135 L	30 gal
Engine oil capacities	7 L	1.5 gal
Hydraulic oil tank capacities	150 L	33 gal

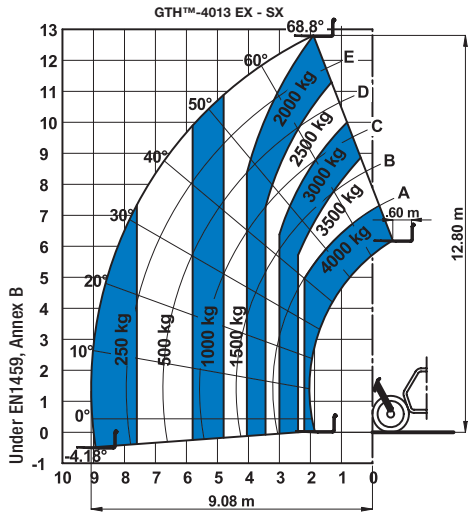
WEIGHT		
Weight**	10,100 kg	22,267 lbs

STANDARDS COMPLIANCE

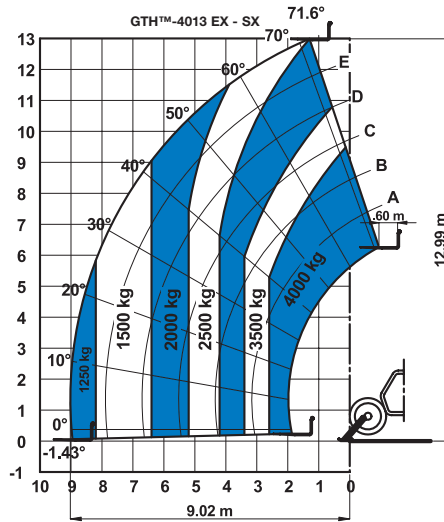
EU Machinery Directive 2006/42/EC
 Operating cab conforms to ISO3471 (ROPS) and ISO3449 (FOPS)
 Low emission engine conforms to EU Directive 97/68/EC Stage III and 2004/26/EC
 Noise emission conforms to EU Directive 2000/14/EC (LpA=83 dB, LwA=103dB)
 Vibration levels according to EN13059:2002 (hand-arm <2.5m/s², whole body 0.23m/s²)

* Without load

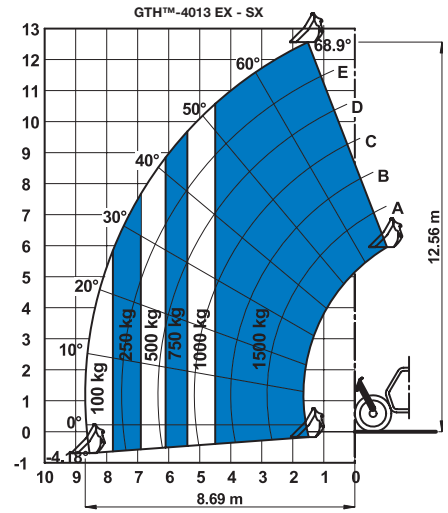
** Weight will vary depending on options and/or country standards



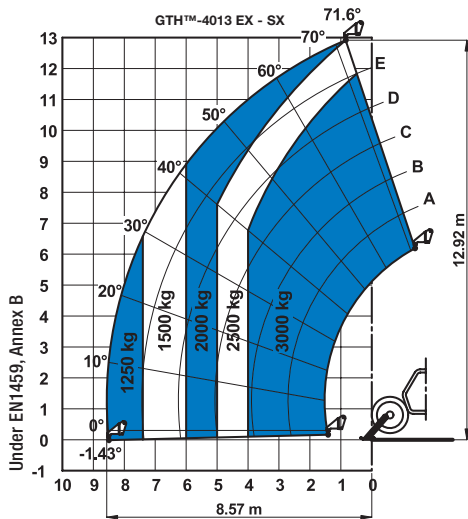
On wheels with forks



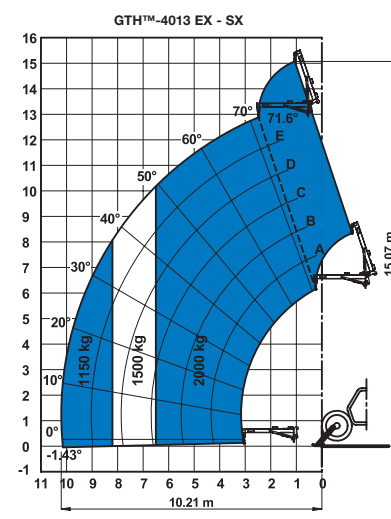
On outriggers with forks



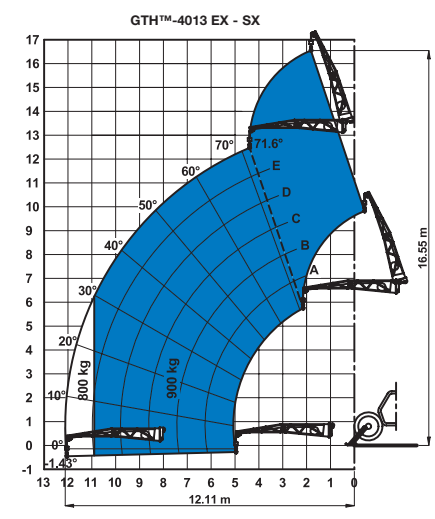
On wheels with 800 L shovel



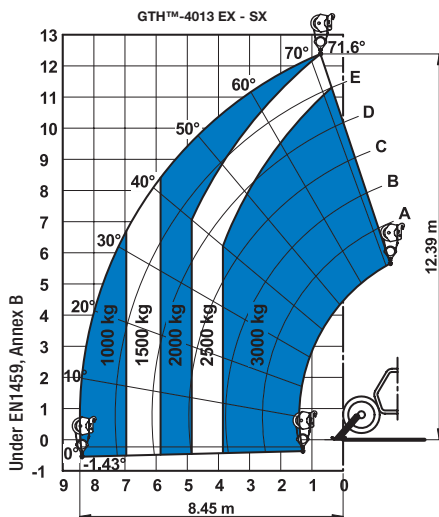
On outriggers with 5t fixed hook on plate



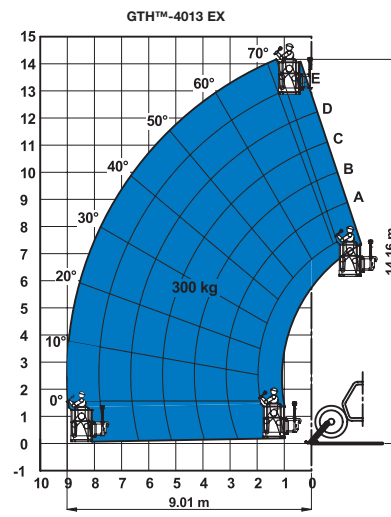
On outriggers with 2m jib (mechanical)



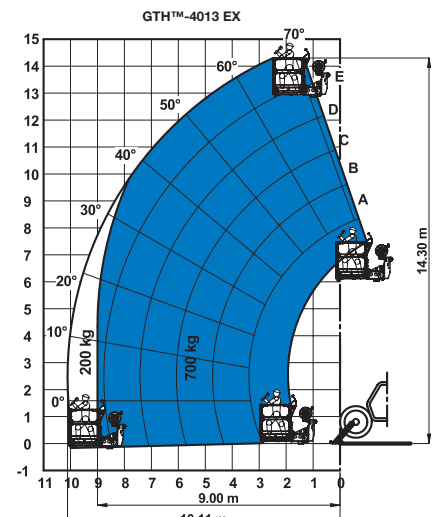
On outriggers with 4m jib (mechanical/hydraulic)



On outriggers with 3t hydraulic hoist



On outriggers with fixed work platform



On outriggers with rotating extendable work platform